

FENCE TECH INNOVATION

Your security is our pledge



- **BARBED WIRE FENCING**
- **CHAIN-LINK WIRE FENCING**
- **ELECTRIC SOLAR SECURITY WIRE FENCING**

www.fencetechinnovations.com
E-mail: fencetechinnovation@gmail.com

BARBED WIRE FENCING

"The best choice provider to improve the security level of various fences"

For over 15 years, Fence Tech Innovations Corporation has been offering the strong and durable barbed wire to a wide range of places. We are specialized in barbed wire producing and exporting, and our products are widely used for prison fencing, airport fencing, highway fencing, military site fencing, residence fencing and so on. Advanced production equipment, skilled workers, professional sale representatives and considerate after sale service contribute our high-quality products and long-term cooperation with our customers. We believe that Fence Tech Innovations will do it better and better.



Barbed wire, also known as bob wire, is made of carbon steel, aluminum alloy steel or stainless steel. It can be used individually to form the barbed wire fence, and it also can be attached onto various fences, such as chain link fence, welded wire mesh fence or palisade fence for high level security barrier. It's widely used for farm fencing, ranch fencing, airport fencing, building fencing, large construction site fencing and so on.

Compared with other fences, our barbed wire produce is stronger, more durable and has higher level of security. Its sharp edge can frighten intruders and thieves, and it is available to combine with other fences for security barriers.

Features

- Sharp edge frightens intruders and thieves.
- High stability, rigidity, and tensile strength to prevent cutting or destroying.
- Anti-acid and alkali.
- Harsh environment resistance.
- Corrosion and rust resistance.
- Available to combine with other fences for high level security barrier.
- Simple and convenient installation and uninstallation.
- Easy to maintain.
- Durable and long service life.

Specification

- **Material:** carbon steel, aluminum alloy, stainless steel.
- **Surface treatment:** galvanized or PVC coated.
Common colors of PVC are green, yellow, blue, red, white, and black.

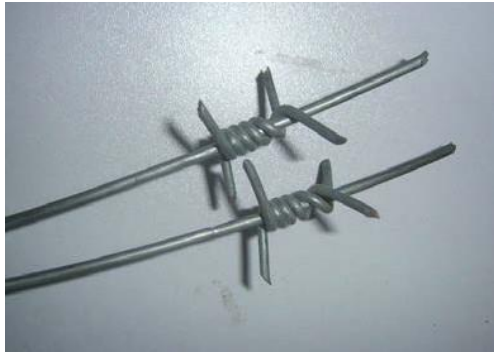


Galvanized barbed wire



PVC coated barbed wire

- **Line wire**
 - **Tensile strength:** 1235 N/m².
 - **Galvanization:** 275 g/m².
- **Barbed**
 - **Tensile strength:** 350 N/m².
 - **Galvanization:** 240 g/m².
- **Strand structure**
 - **Single strand barbed wire:** formed with one line wire and many barbs.
 - **Double strand barbed wire:** formed with two line wires and many barbs.



Single strand barbed wire



Double strand barbed wire

- **Barbed structure**

- **Single barbs** (2-point barbed wire).
- **Double barbs** (4-point barbed wire).

- **Twist style**

- **Traditional twist:** barbs through two wires first, then wires are twisted.
- **Reverse twist:** two wires are twisted first, then barbs fastened onto wires.



Traditional twist



Reverse twist

- **Packaging**

- Pallet package for easy loading.
- Bulk package for saving space.



Pallet package



Bulk package

- **Using method**

- Used individually to form barbed wire fence.
- Attached onto various fences for high level security fence barrier, such as chain link fence welded wire mesh fence, expanded mesh fence or palisade fence.

Table 1: Standard Sizes and Constructions for Barbed Wire

Design Number	Size, Steel Wire Gage	Diameter of Coated Wire, in. (mm)	Number of Barb Points	Spacing of Barbs, in. (mm)	Diameter of Barbs, Steel Wire Gage	Shape of Barbs
12-4-3-14R	12.5	0.099 (2.51)	4	3 (76)	14	round
12-4-3-12R	12.5	0.099 (2.51)	4	3 (76)	12	round
12-2-4-12F	12.5	0.099 (2.51)	2	4 (102)	12.5	flat
12-2-4-13F	12.5	0.099 (2.51)	2	4 (102)	13	flat
12-2-4-14R	12.5	0.099 (2.51)	2	4 (102)	14	round
12-2-5-12F	12.5	0.099 (2.51)	2	5 (127)	12.5	flat
12-4-5-14R	12.5	0.099 (2.51)	2	5 (127)	14	round
12-4-5-14H	12.5	0.099 (2.51)	4	5 (127)	14	half-round
12-4-5-14R	12.5	0.099 (2.51)	4	5 (127)	14	round
13-2-4-14R	13.5	0.086 (2.18)	2	4 (102)	14	round
13-4-5-14R	13.5	0.086 (2.18)	4	5 (127)	14	round
14-2-4-14F	14	0.080 (2.03)	2	4 (102)	14	flat
14-2-5-14F	14	0.080 (2.03)	2	5 (127)	14	flat
14-4-3-14F	14	0.080 (2.03)	4	3 (76)	14	flat
14-4-5-14F	14	0.080 (2.03)	4	5 (127)	14	flat
14-2-5-14R	14	0.080 (2.03)	2	5 (127)	14	round
15-4-5-14R	14	0.080 (2.03)	4	5 (127)	14	round
15-2-5-13F	15.5	0.067 (1.70)	2	5 (127)	13.75	flat
15-2-5-14R	15.5	0.067 (1.70)	2	5 (127)	14	round
15-4-5-16R	15.5	0.067 (1.70)	4	5 (127)	16.5	round

Table 2: Specifications of Concertina Barbed Wire

Item	Coil Diameter Before Stretching (mm)	Coil Diameter After Stretching (mm)	Spiral Turns Per Coil	Clips Per Spiral
CBWF-01	300	260	33	3
CBWF-02	450	400	54 or 55	3
CBWF-03	730	600	54 or 55	3
CBWF-04	730	620	54 or 55	5
CBWF-05	980	820	54 or 55	5
CBWF-06	980	850	54 or 55	7
CBWF-07	1250	1150	54 or 55	9

Application

Used individually to form the barbed wire fence or attached onto various fences for high level security fence barrier.

- Airport fencing.
- Prison fencing.
- Military site fencing.
- Construction site fencing.
- Square fencing.
- Farm fencing.
- Ranch fencing.
- Highway fencing.
- Railway fencing.
- Factory fencing.
- Residence fencing.
- Building wall fencing.
- Orchard fencing.
- Garden fencing.
- Plant fencing.
- River fencing.
- High voltage fencing.
- Road fencing.
- Private land fencing.
- Border Fencing



Used individually

Used with chain link fence

Used with welded wire mesh fence

Used with expanded mesh fence

Used with palisade fence

Used with field fence

Fitting terminology

- Barbed—as related to barbed wire, a short length of wire, with exposed ends cut on a bias to produce sharp points.
- Barbed wire arm—a post fitting used to hold barbed wire in place. May be vertical or angled to hold three or more strands of barbed wire, or "V" shaped to hold six or more strands of barbed wire.
- Barbed wire arm base—a casting of aluminum, malleable iron, or steel, used in combination with one or two barbed wire extension arms held in place by a bolt and nut.
- Barbed wire extension arm—pressed aluminum or pressed galvanized steel used in combination with barbed wire arm base to hold three strands of barbed wire either vertically or angled in or out from the fence line. Also used in pairs in a "V" configuration to hold 6 strands of barbed wire.
- Brace band—a symmetrically formed strip of metal shaped to fit around a post and used with a carriage bolt and nut to attach the rail end or brace rail end truss rod tightener to the post, also used for attaching barbed wire, tension wire, and other items to a terminal post.
- Tension band—an offset strip of metal shaped to fit around the terminal post and used with a carriage bolt and nut to attach the tension bar to the post.

Barbed wire arms



V barb arm



45 degree barb arm



Straight barb arm

Barbed wire fences installation steps and tips

1. Select end and corner locations.
2. Install 6" x 8' wood post H-brace assembly for ends and double corner H-brace assemblies for corners on the ground. 3.5' to 4' leaving 4' out of ground adjust post length if taller fence is required.
3. Carefully unroll end of 4' to 8' of barbed wire and fasten by wrapping around starting post and back onto itself at desired height for lowest strand.

4. Carefully unroll the barbed wire to end of fence.
5. Tension wire with chain wire strainer at end.
6. Cutline wire to proper length and fasten wire at desired height as done at the beginning.
7. The first wire should be adjusted (to obtain a straight line) along the fence line with light tension by picking wire up to a height of 4' to 6' then dropping wire. This process should be repeated until straight line from beginning to end is achieved. This process will allow wire to fall creating a straight line for the fence to follow.
8. Using the first wire as a straight line, install line posts (wood or steel) at 15' to 20' apart, adjusting distance as necessary. (High-pressure fences like feed lots will need heavier posts, closer together.)
9. Fasten barbed wire to T post with wire clip (usually provided with new T posts) or staple barbed wire to wood posts leaving room for wire to "float" when stapled (not staple wire tight to post.)
10. When installing line posts make sure that any post that will have strain (vertical or horizontal) on it is stout and secure enough to take the strain. As in wood post 5" to 6" x 8' (multiples if necessary) in dips or other low areas and on crowns or high areas.
11. Repeat necessary process for additional wires.

Hot barbed wire specifications

Three or six strands of barbed wire on the top of the fence.

- 12-4-3-14R having 4-point barbs spaced 3 in. on center.
- 12-4-5-14R having 4-point barbs spaced 5 in. on center.

Tips for choosing barbed wire

- **Material**

Barbed wire can be made of different materials including carbon steel, aluminum steel or stainless steel.

- **Strand structure**

There are two types of strand structure: single strand barbed wire (concertina barbed wire) and double strand barbed wire (barbed wire). Concertina barbed wire is often manufactured and used by rolls, barbed wire is often manufactured and used by straight lines.

- **Twist style**

There are conventional and reverse twist styles. Generally speaking, reverse twist barbed wire is stronger in structure than conventional twist barbed wire, but the conventional barbed wire has a lower price.

- **Packaging method**

We can offer pallet packaging or bulk packaging for your reference.

- **Specific application**

If you want to purchase the barbed wire for special or specific uses, you can browse our specific product and gallery page. If you have any questions, please contact us on the line, and our related staff will provide you with free consultation service.

CHAIN-LINK WIRE FENCING

We are considered amongst the foremost manufacturers of a wide range of **Iron Chain Link Fence**. This product is designed by making use of finest quality raw material and modern technology in complete compliance with international quality standards. In addition, the used raw material is obtained from the trusted source of industry. In order to deliver a perfect range at clients' end, it is thoroughly checked on various quality parameters.



The product is fencing great demand in the market as we include premium quality raw material like mild steel, galvanized wire, galvanized mild steel wire, high carbon steel wire and aluminum wire while manufacturing the lot. The range is extensively used as fences for playground and gardens, super highway, railway, airport, port, residence, commercial, breeding of animals and many other applications as well.

Salient features:

- Made of superior quality raw material
- Usable in various application areas
- Corrosion resistant
- High tensile strength

HOW TO ERECT CHAIN LINK FENCE

STEP 1 - SURVEY PROPERTY LINES

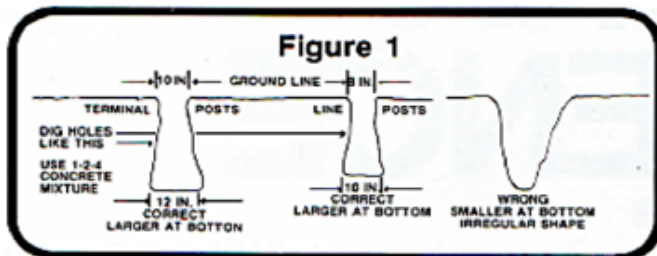
Be sure that the desired location of fence lines does not exceed property lines. This is very important. We recommend that all posts be set approximately 4" inside of the property line to avoid encroaching on adjoining property with the concrete foundations. This may be done by stretching string or chalk lines on the property line and setting posts approximately 4" inside of them.

STEP 2 - LOCATE AND SET TERMINAL POST

First determine the location of end, corner, and gate posts (which are referred to as terminal posts).

Distance between gate posts is determined by adding the actual width of the gate to an allowance for hinges and latches. Single walk gates require 33/4" for hinges and latches and double drive gates require 51/2". For example, a 3-foot walk gate should measure 321/4" wide. Adding 33/4" to the width means that the distance between posts (inside face to inside face) should be 36". (See Figure 13.)

Now, dig the holes as shown below in Figure 1. (To determine depth hole, see Figure 2 - Measurement C.)

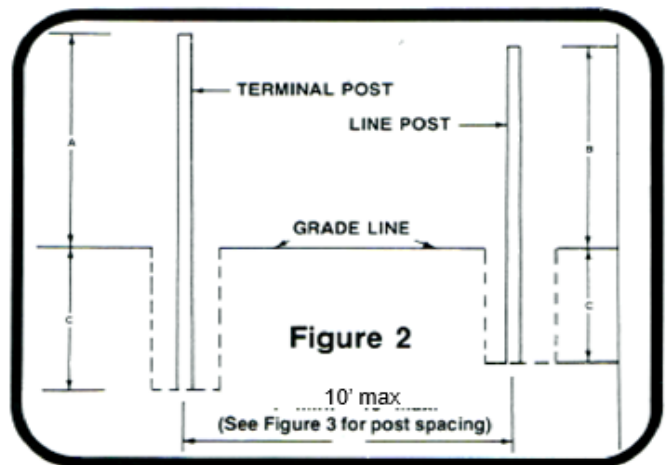


Next, mark all posts with crayon or chalk for the correct height of fence you are installing (see Figure 2 -). Terminal posts should be set 2" higher than the width of the fabric and line posts 2" lower than the fabric width.

Set the terminal posts in concrete using a concrete mix as follows: 1 part cement, 2 parts sand, and 4 parts gravel. Mix a fairly heavy solution as too much water weakens concrete and may cause cracking. Use a carpenter's level to set posts plumb. Crown all post footings for water drainage by sloping concrete away from post.

WARNING: WHEN DIGGING POST HOLES WATCH FOR AND CHECK OUT ANY UNDERGROUND CABLE OR PIPE LINES AND CONTRACT YOUR LOCAL UTILITY.

Mark the grade line on all line posts measuring from the top down as shown in Figure 2. Then measure the distance between terminal posts and check line post spacing chart (Figure 3 below) for exact distance to allow between line posts.



*Footing Size C - Depending on soil conditions, minimum footing depth 24" for 4 ft height add 3" depth to every additional 1 ft height over 4 ft. Minimum diameter, 4 times the largest cross section of post

Fence Height	A	B	C
4.0'	44"	40"	*
5.0'	62"	58"	*

Figure 3

Line Post Spacing Chart

Space	Set Post Apart	Space	Set Post Apart	Space	Set Post Apart	Space	Set Post Apart	Space	Set Post Apart
30 ft.	10 ft.	51 ft.	8 ft. 6 in.	71 ft.	8 ft. 9 in.	92 ft.	9 ft. 2 in.	112 ft.	9 ft. 4 in.
31 ft.	7 ft. 9 in.	52 ft.	8 ft. 8 in.	72 ft.	9 ft.	93 ft.	9 ft. 3 in.	113 ft.	9 ft. 5 in.
32 ft.	8 ft.	53 ft.	8 ft. 10 in.	73 ft.	9 ft. 2 in.	94 ft.	9 ft. 5 in.	114 ft.	9 ft. 6 in.
33 ft.	8 ft. 3 in.	54 ft.	9 ft.	74 ft.	9 ft. 3 in.	95 ft.	9 ft. 6 in.	115 ft.	9 ft. 7 in.
34 ft.	8 ft. 6 in.	55 ft.	9 ft. 2 in.	75 ft.	9 ft. 4 in.	96 ft.	9 ft. 7 in.	116 ft.	9 ft. 8 in.
35 ft.	8 ft. 9 in.	56 ft.	9 ft. 4 in.	76 ft.	9 ft. 6 in.	97 ft.	9 ft. 7 in.	117 ft.	9 ft. 9 in.
36 ft.	9 ft.	57 ft.	9 ft. 6 in.	77 ft.	9 ft. 7 in.	98 ft.	9 ft. 8 in.	118 ft.	9 ft. 10 in.
37 ft.	9 ft. 3 in.	58 ft.	9 ft. 8 in.	78 ft.	9 ft. 9 in.	99 ft.	9 ft. 9 in.	119 ft.	9 ft. 10 in.
38 ft.	9 ft. 6 in.	59 ft.	9 ft. 10 in.	79 ft.	9 ft. 10 in.	100 ft.	10 ft.	120 ft.	10 ft.
40 ft.	10 ft.	60 ft.	10 ft.	80 ft.	10 ft.	101 ft.	9 ft. 2 in.	121 ft.	9 ft. 3 in.
41 ft.	8 ft. 2 in.	61 ft.	8 ft. 8 in.	81 ft.	9 ft.	102 ft.	9 ft. 3 in.	122 ft.	9 ft. 4 in.
42 ft.	8 ft. 5 in.	62 ft.	8 ft. 10 in.	82 ft.	9 ft. 1 in.	103 ft.	9 ft. 4 in.	123 ft.	9 ft. 5 in.
43 ft.	8 ft. 6 in.	63 ft.	9 ft.	83 ft.	9 ft. 3 in.	104 ft.	9 ft. 5 in.	124 ft.	9 ft. 6 in.
44 ft.	8 ft. 9 in.	64 ft.	9 ft.	84 ft.	9 ft. 4 in.	105 ft.	9 ft. 6 in.	125 ft.	9 ft. 7 in.
45 ft.	9 ft.	65 ft.	9 ft. 3 in.	85 ft.	9 ft. 6 in.	106 ft.	9 ft. 7 in.	126 ft.	9 ft. 8 in.
46 ft.	9 ft. 2 in.	66 ft.	9 ft. 5 in.	86 ft.	9 ft. 7 in.	107 ft.	9 ft. 8 in.	127 ft.	9 ft. 9 in.
47 ft.	9 ft. 5 in.	67 ft.	9 ft. 7 in.	87 ft.	9 ft. 8 in.	108 ft.	9 ft. 9 in.	128 ft.	9 ft. 10 in.
48 ft.	9 ft. 7 in.	68 ft.	9 ft. 8 in.	88 ft.	9 ft. 9 in.	109 ft.	9 ft. 10 in.	129 ft.	9 ft. 10 in.
49 ft.	9 ft. 9 in.	69 ft.	9 ft. 10 in.	89 ft.	9 ft. 10 in.	110 ft.	10 ft.		
50 ft.	10 ft.	70 ft.	10 ft.	91 ft.	9 ft. 2 in.	111 ft.	9 ft. 3 in.		



Used individually to form the Chain-Link Wire Fencing or attached on to various fences for high level security fence barrier.

- Military site fencing.
- Construction site fencing.
- Square fencing.
- Farm fencing.
- Highway fencing.
- Railway fencing.
- Factory fencing.
- Residence fencing.
- Boundary wall fencing.
- Garden fencing.
- Plant fencing.
- River fencing.
- High voltage fencing.
- Road fencing.
- Private land fencing.
- Airport fencing.
- Border Fencing



ELECTRIC SOLAR SECURITY WIRE FENCING

DESCRIPTION

Security Fencing is the modern day's alternative to the conventional type of perimeter protection. These are active fences and punish the unwelcome intruder the moment they touch the fence or try to tamper the fence. The conventional types of fences are only passive fences and cannot resist the intruder if they try to forcibly intrude into the protected area. The Security Fence gives a sharp, short but a safe shock and creates psychological fear. Against any tampering the alarm incorporated in the system gets activated and alerts the inmates of the protected area, which facilitates them to counter the unwelcome intruders.

Maintaining boundary security and reducing the risk of successful penetration on a perimeter fence can be achieved using a combination of system technologies. Industries Care Solutions can offer a complete turn key solution, offering not only detection, but deterrence as well. Delivering a short and sharp electric shock deters even the most determined offender, reducing the risk of theft from a protected site and preventing unauthorized entry.



ELECTRIC SECURITY FENCING

Your security is our pledge



+91 9369071119

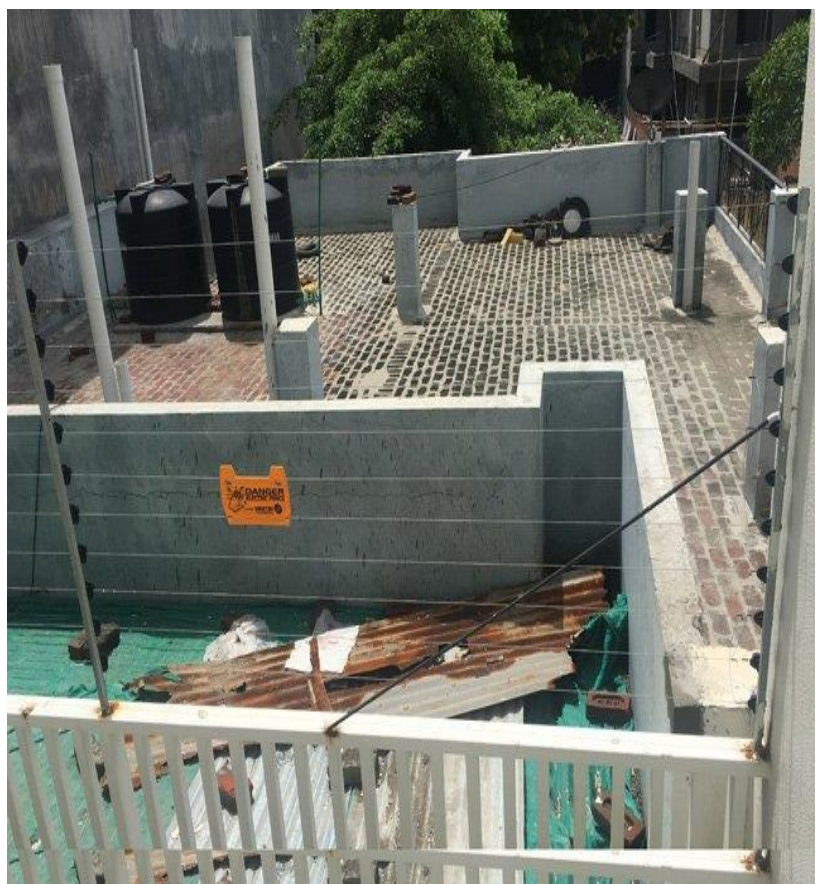
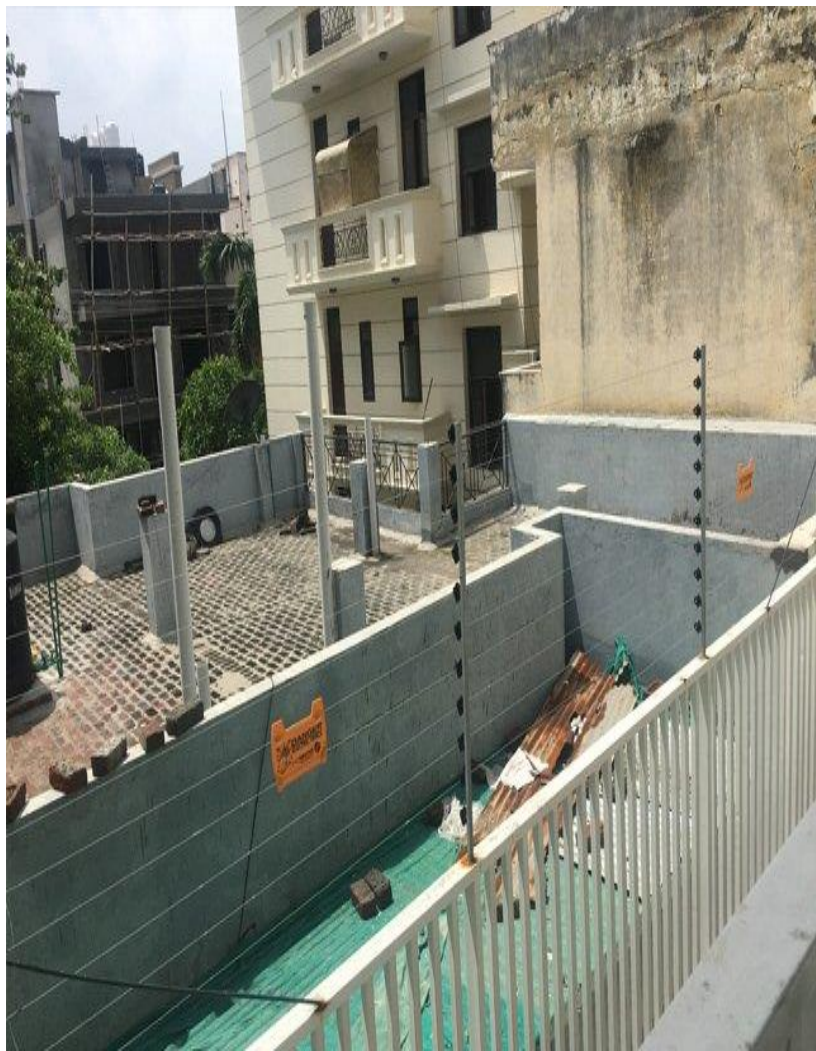
We are Manufacturer & Supplier of
Electric & Solar Security Fencing Systems.

- ⚡ Protect farm land or boundary from animals
- ⚡ Protection from blue bull, monkeys, boar etc.
- ⚡ Uses free, renewable solar energy
- ⚡ Designed to survive extreme weather conditions
- ⚡ Give a short, sharp but safe shock
- ⚡ Doesn't cause loss of life
- ⚡ No risk of electrocution
- ⚡ Works even when power failures occur.



Used individually to form the Electric Solar Security Wire Fencing or attached on to various fences for high level security fence barrier.

- Residence fencing.
- Commercial fencing
- Industrial fencing
- Farm fencing.
- Factory fencing.
- Boundary wall fencing.
- High Security fencing.
- Animal Control & Agriculture fencing.















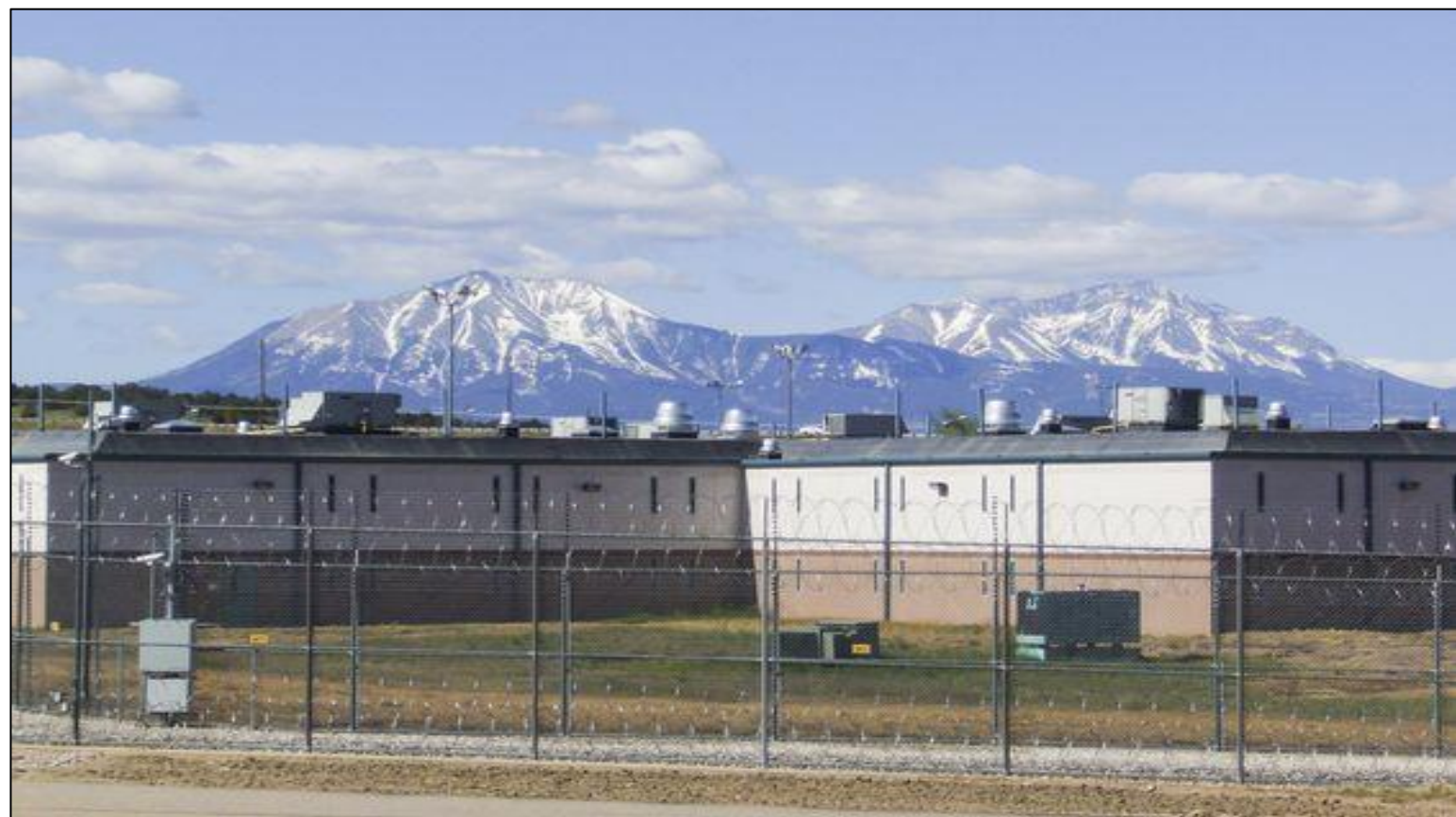
Before



After









OUR FOOTPRINTS

